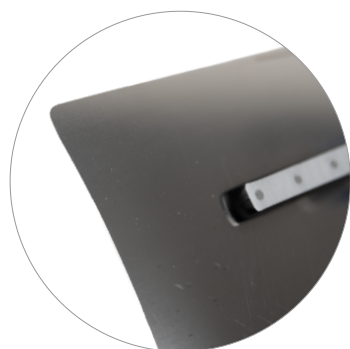


NEW

Kubala®

Trowel for joining plasterboards,
3K soft handle on an aluminum foot, MASTER LINE
catalogue no. **0280**



MADE IN POLAND

Polish manufacturer since 1987



DIMENSIONS

130 x 350 mm



PACKING

1 box - 6 pcs.



QUALITY GUARANTEE

- Ergonomic, balanced, shaped **3K soft handle**.
- **Aluminum foot** guaranteeing greater stiffness and balance of the working part.
- **Stainless, acid resistant steel**, thickness: 1 mm.
- The specially contoured concave working part, with the appropriate cutout, completely **eliminating any spillage beyond the defined surface**.
- **The convex part is used for embedding reinforcing tapes** at the recommended depth.
- The use of this trowel **eliminates errors** commonly made during the treatment of gypsum board joints.
- This tool is **meticulously selected** and refined for demanding craftsmen.



facebook.com/**kubalapl**



instagram.com/**kubala.tools**

www.kubala.com